



## THE ADVANCED PLATFORM

- Same basic racking approach installers have been using for decades
- US based supply chain with quality materials at a competitive price
- Rail based and Rail-free solutions with connection hardware for any application

### Core Components

Clamp



Rail



Base



**Accessories:** The Platform uses the same T-bolt and nut to accommodate all accessories.

- Module level power electronics mounting hardware
- Wire management accessories
- Security hardware
- Variety of connection hardware made to work seamlessly with our products
- Light, Medium, and Heavy rail to optimize pricing based on the design conditions

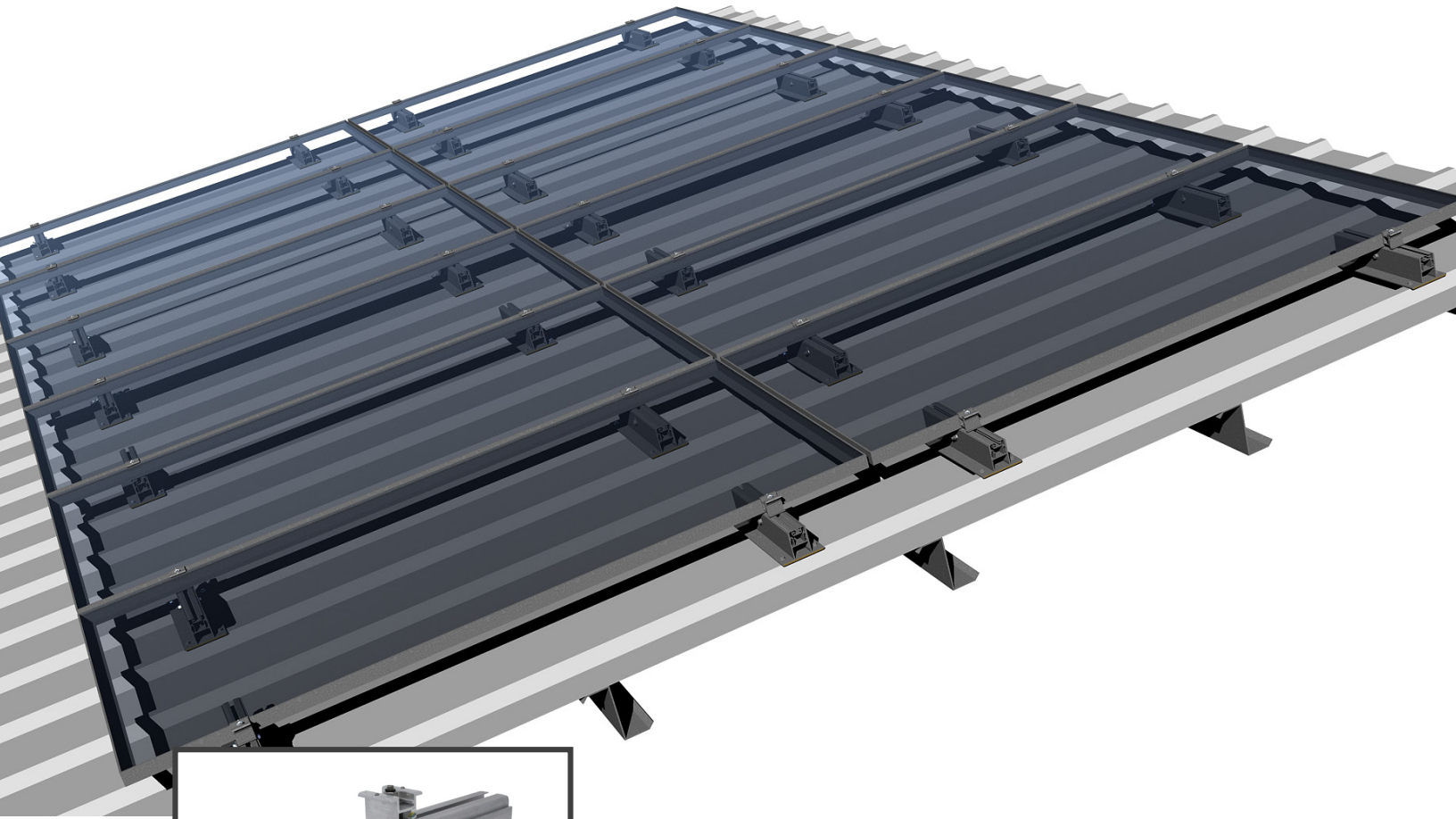
**Buy Online Now!**

**Rail-free solutions  
and Accessories.**

**Seam clamps, deck  
brackets & more.**

**AdvancedRacking.com**

# RAIL-FREE FLUSH MOUNT TRAPEZOIDAL METAL ROOF



The length can be modified to accommodate different spans between the ribs, ships with butyl applied on the bottom of the product. Designed for use on 26 gauge or thicker trapezoidal metal roofs. Not designed for high wind conditions or, non-trapezoidal metal roof profiles.

For more Technical Details, please visit: [AdvancedRacking.com/Downloads](http://AdvancedRacking.com/Downloads)

## Tech Specs:

UL 2703 Bonding & Grounding	Modules: All framed modules 30 - 45mm
Tilt Angles: up to 10 degrees	Wind: boundary layer wind tunnel
Slope: 5 Degree or less	Warranty: 20 years
Aluminum: 6006 & 6063	Stainless Steel: 300 series stainless